



■ Capri - HCS® M1950S

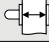



duravert®

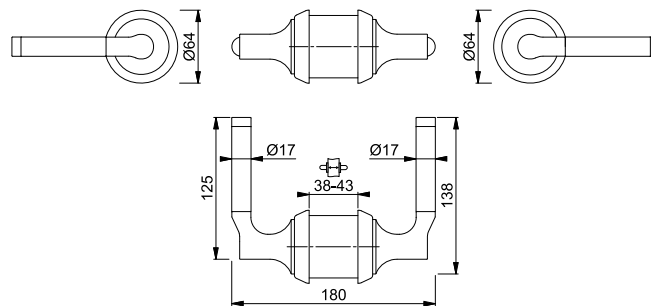
HCS® with brass door handles for interior doors:

- Door type: for flush wood doors
- Version: standard
- System core: aluminium pressure die-casting
- Latch tube: brass with thread
- Latchbolt: glass fibre reinforced nylon, low-noise
- Decorative rings: stainless steel with threaded nylon insert
- Strike plate: none
- Fixing: via latch tube and decorative rings
- Special feature: combines door hardware and lock in a single system, door must be prepared accordingly

3



Description	Version	Door type		F49/F69 Art. no.				P.U.	O.C.
HCS®		Flush door	35-43	2492416				1	10
HCS®, non-keyed locking		Flush door	35-43	2492491				1	10
HCS®, keyed locking/ non-keyed locking		Flush door	35-43	2492521				1	10
HCS®, keyed locking		Flush door	35-43	2492555				1	10



Latch sets for backset 50, 60 and 70 mm can be found on page 107.

Strike plates can be found on page 108 and following pages.

Other decorative rings can be found on page 103 and following pages.